



2 Falkland Drive, Onchan
Isle Of Man

keeps
&co.

Asking Price: £399,500



2 Falkland Drive

Onchan, Isle Of Man

Tenure: Freehold

- A charming period semi-detached home set in a lovely village location.
- Perfectly positioned to enjoy distant views towards Douglas Promenade and the Bay.
- Lovely mature gardens to the front and a private, easy to maintain courtyard-style space to the rear, with ample off-road parking.
- The property retains original period features, adding character to this lovely property
- Spacious family accommodation including an open living / dining room, kitchen and conservatory downstairs.
- Upstairs, three bedrooms and modern family bathroom
- The property benefits from uPVC double glazing and gas-fired central heating.
- A useful utilities cupboard and downstairs WC provide added convenience to the home.
- A detached single garage with ample parking for 4-5 cars.
- This home offers fantastic scope for cosmetic improvements, giving you the chance to tailor the space to your own taste and lifestyle.

Porch

The porch is entered via a glazed UPVC door featuring decorative opaque glass which allows natural light to flow in while maintaining privacy. Practical coconut matting offers a durable, low-maintenance flooring finish, and a glazed inner door leads through to the inviting hallway.

Entrance Hall

The hallway is bright and welcoming, with stairs leading to the first floor and a large UPVC window that floods the space with natural light. A useful utility cupboard houses the electric fuse board and meter, offering ideal storage for shoes, coats, and muddy wellies. Additional coat hooks provide convenient hanging space and a further window enhances the light.

Living Room

The lounge features a period bay window with south-west facing views over the garden towards Douglas Bay. There is a feature electric fire with a stone-effect surround and hearth, and a television point.

Dining Room

There is a spacious dining room which connects to the living room, creating a lovely open space, which is perfect for everyday family use and entertaining.

Kitchen

A fitted kitchen featuring a range of white fronted cupboards and drawers, complemented by a marble-effect worktop which incorporates a 1½ bowl stainless steel sink and drainer, with tiled splashbacks. This well-equipped kitchen includes a 4-ring gas hob with a stainless steel splashback and extractor hood above, along with an eye-level oven and grill. There is space and plumbing for an under-counter dishwasher and washing machine, as well as a designated area for a tall fridge freezer. A cupboard discreetly houses the gas-fired central heating boiler. The room enjoys dual-aspect windows, allowing plenty of natural light to fill the space throughout the day.





Kitchen cont...

There is excellent storage provided by the generous selection of cupboards, and the room is completed with a wood-effect flooring. An opening leads directly into the conservatory, creating a natural flow between the living spaces.

Conservatory

The conservatory features wood-effect flooring and enjoys pleasant views over the rear garden, with direct access outside.

Downstairs Wc

The downstairs WC features a toilet and wash hand basin with tiled walls, an extractor fan and fitted mirror.

Landing

A light and airy landing with a large uPVC window and the original banister and balustrades.

Bedroom 1

A spacious bedroom featuring a period bay window with lovely south-westerly views towards Douglas Bay. The room includes wall-to-wall wardrobes with sliding doors.

Bedroom 2

A double bedroom with a rear aspect, featuring wall-to-wall wardrobes with hanging, shelving and sliding doors.

Bedroom 3

A lovely single bedroom with front aspect sea views towards Douglas Bay.



Family Bathroom

The modern bathroom features a corner shower cubicle with an electric shower, tiled surround, and a folding glass door and screen. There is also a miniature bath, ideal for children. Additional fittings include a wash hand basin with vanity storage below, a WC and a heated towel rail. Two uPVC windows with decorative opaque glass provide plenty of natural light. The room has part-tiled walls, fitted blinds and access to the loft.

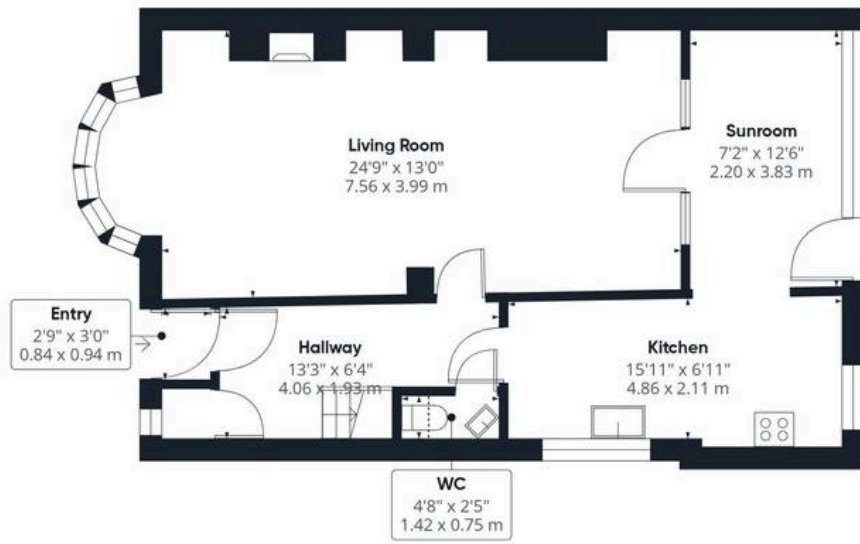
Garage

The detached single garage offers useful space for a car, motorbikes, or outdoor equipment. It is equipped with an electric up-and-over door, along with power and lighting. The apex roof provides the option for extra storage. A driveway in front of the garage offers off-road parking for one vehicle.

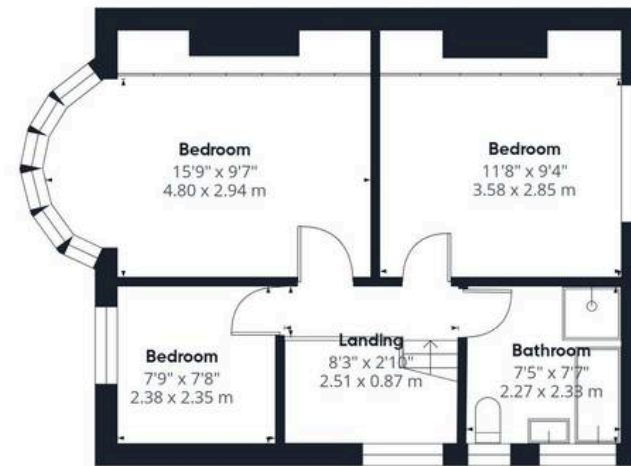
Outside

To the front of the property is a beautiful mature garden, filled with a variety of flowers and shrubs, with hedging to the boundaries. A pathway leads through the well-stocked flower beds to the front door, creating a warm and welcoming introduction. To the side of the property is a large tarmac driveway, providing additional parking for 3-4 vehicles, ideal for those with a motorhome or households with multiple cars. To the rear is an easy to maintain courtyard-style garden, with flowers and shrubs adding colour and interest. There is also access to a second off-road parking space in front of the detached single garage, which could be utilised as a small workshop, hobbies room or for additional storage needs.





Floor 0 Building 1



Floor 1 Building 1



Floor 0 Building 2

Approximate total area⁽¹⁾

1220 ft²

113.3 m²

Reduced headroom

3 ft²

0.3 m²

(1) Excluding balconies and terraces

Reduced headroom

----- Below 5 ft/1.5 m

Calculations reference the RICS IPMS 3C standard. Measurements are approximate and not to scale. This floor plan is intended for illustration only.

GIRAFFE 360



Koops & Co. Limited

PO Box 11 Douglas, Isle of Man - IM99 1FW

01624 666625

hello@koopsandco.com

<http://koopsandco.com>

We've put together these property details to give you a general idea of what the property is like. They're not meant to be part of an offer or contract. We haven't done a structural survey, and we haven't tested the services, appliances, or specific fittings. All the photos, measurements, floorplans, and distances mentioned are just for guidance only and shouldn't be relied on for buying carpets or any other fixtures or fittings. The copyright for all details, photos, and floorplans belongs exclusively to Koops & Co. Neither the Vendor nor Koops & Co, nor anyone employed by them, has the authority to make any promises or guarantees about the property.